



Available
For Lease

John Carpin

Senior Vice President
+1 804 267 7216
john.carpin@colliers.com

Catherine Walker

Associate Vice President
+1 804 968 1978
catherine.walker@colliers.com

2221 Edward Holland Dr
Suite 600 | Richmond, VA
P: +1 804 320 5500
colliers.com/richmond

Center Park V

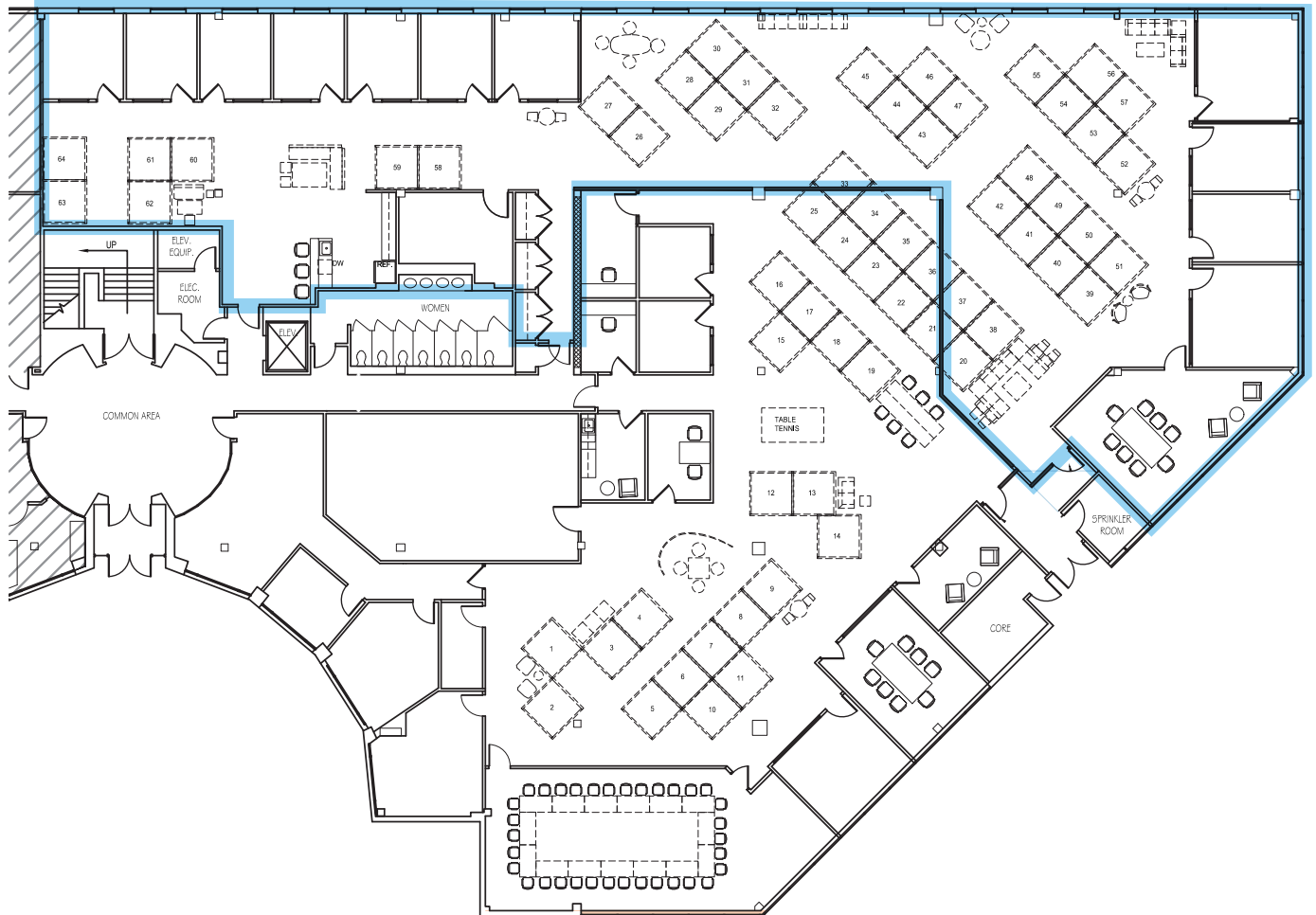
4405 Cox Rd, Glen Allen, VA 23060

- 65,313 SF Class A building in the heart of Innsbrook Corporate Center
- Available Suites:
 - 100: 8,194 RSF
 - 160: 1,994 RSF
 - 170: 4,015 RSF
 - 210: 3,968 RSF
 - 225: 6,157 RSF
 - 240: 2,596 RSF
 - 260: 4,583 RSF
- Newly renovated 1st floor common areas and lobby
- 4/1,000 SF parking
- Signalized intersection at Center Park entrance
- Innsbrook features 850 acres with 5 million square feet of office space with walking/jogging trails and 3 lakes
- Easy access to I-64, I-288 and US 250 as well as numerous retail, lodging, restaurant, and hotel options
- Owned by Lingerfelt and professionally managed by Commonwealth Commercial

Center Park V

Available Suites

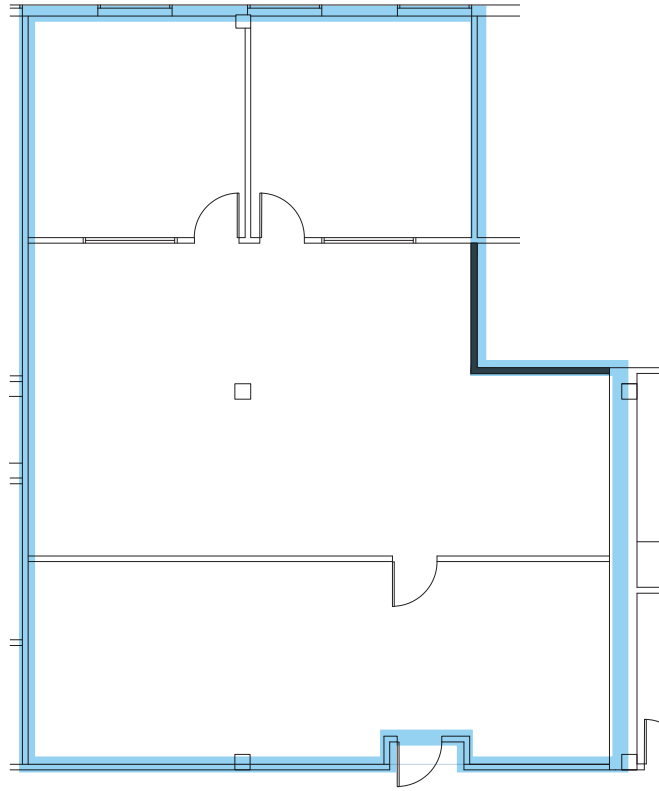
Suite 100: 8,194 RSF



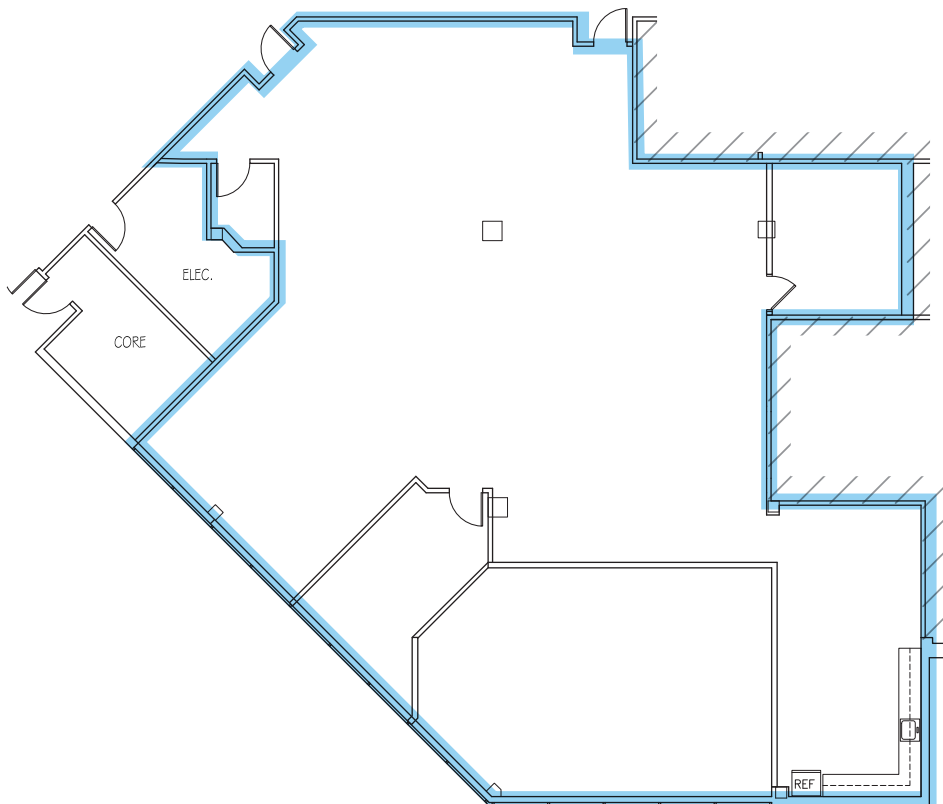
Center Park V

Available Suites

Suite 160: 1,992 RSF



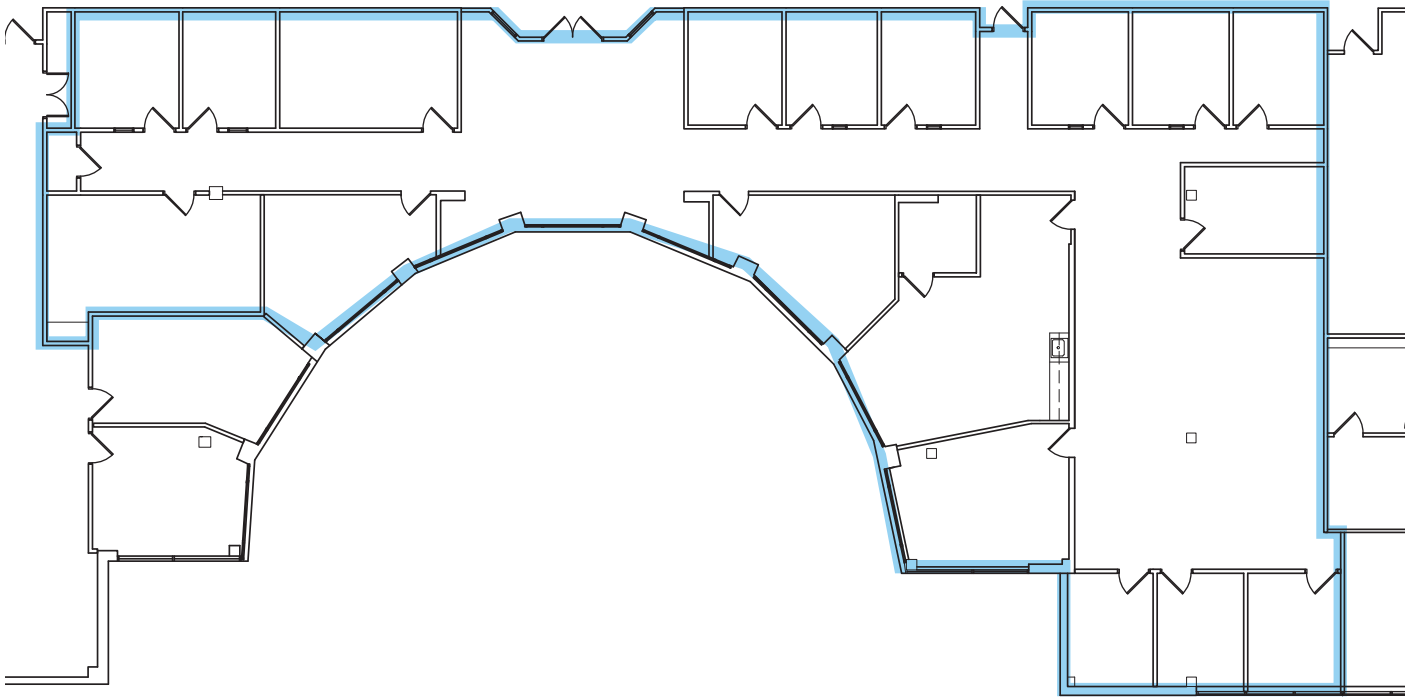
Suite 170: 4,015 RSF



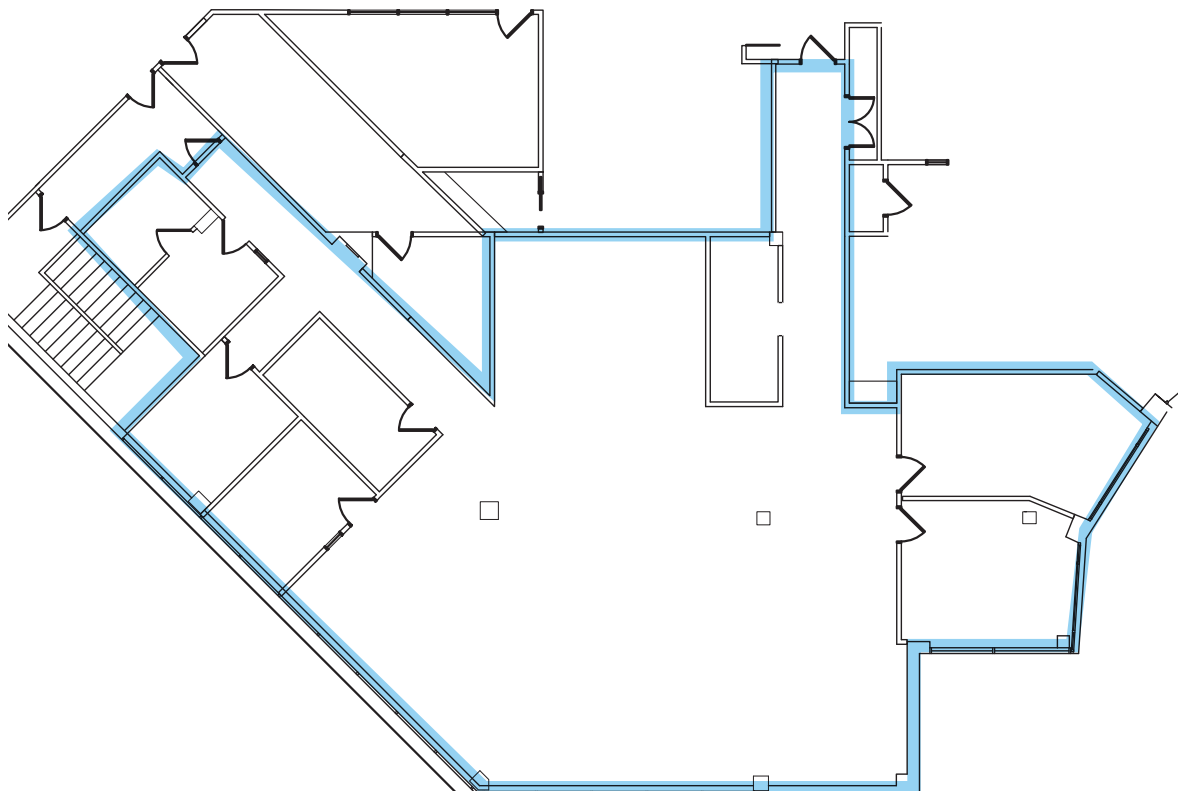
Center Park V

Available Suites

Suite 225: 6,157 RSF



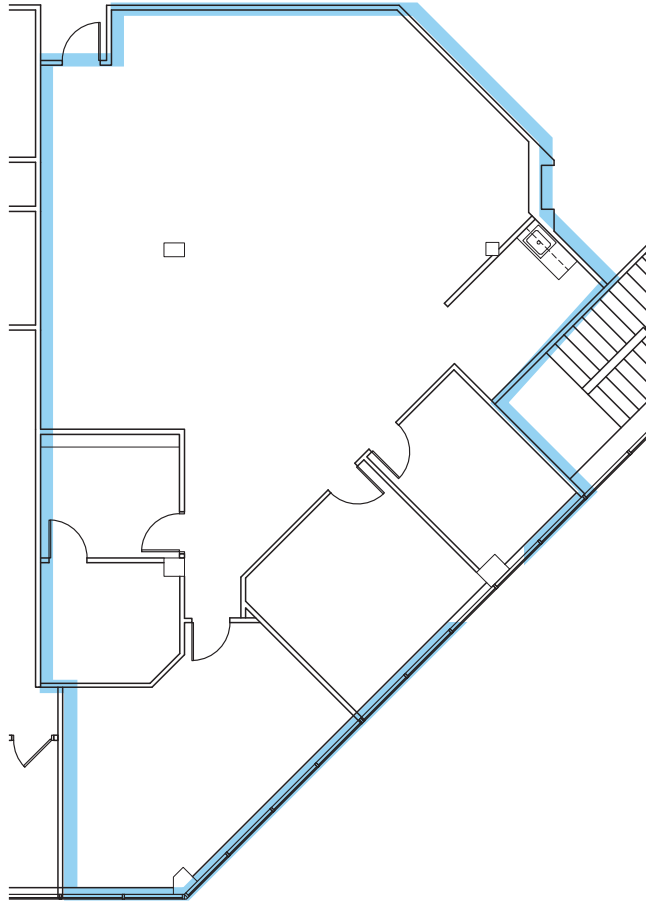
Suite 210: 3,968 RSF



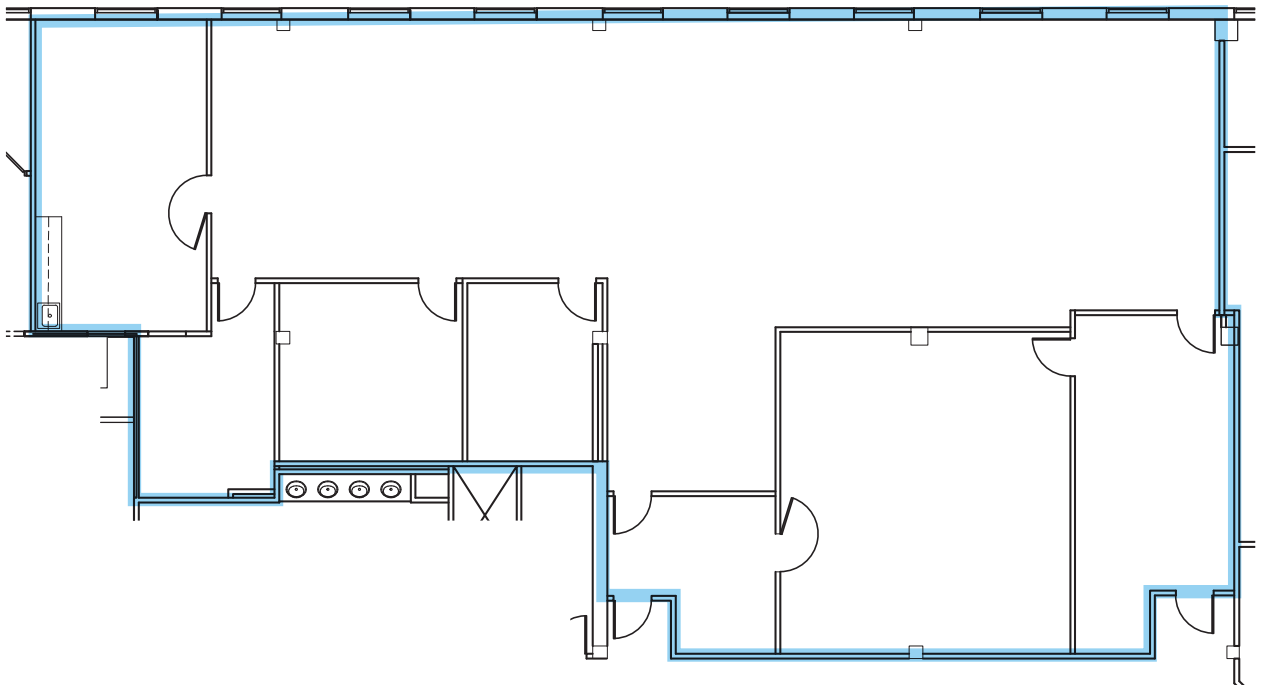
Center Park V

Available Suites

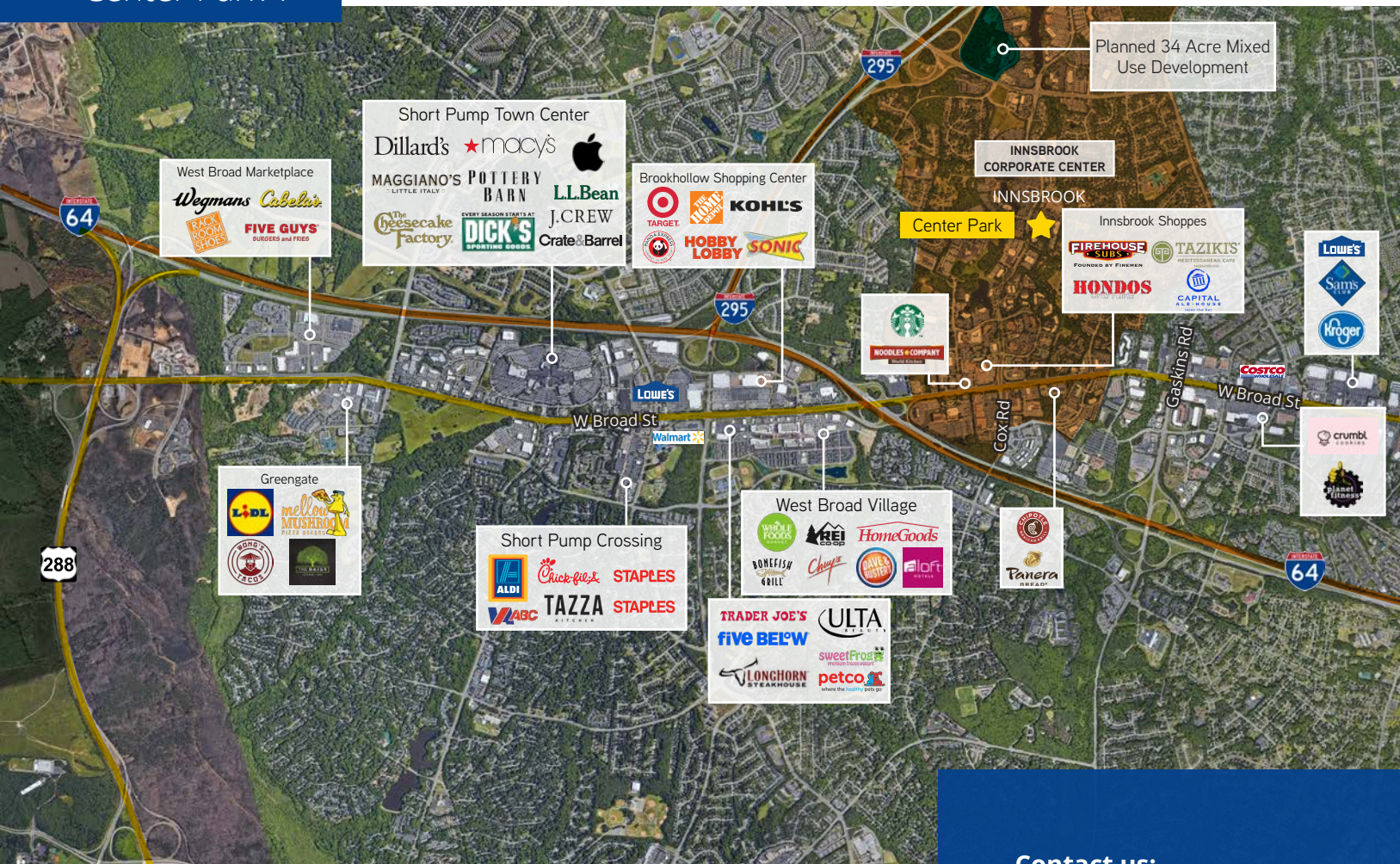
Suite 240: 2,596 RSF



Suite 260: 4,583 RSF



Center Park V



Contact us:

John Carpin

Senior Vice President

+1 804 267 7216

john.carpin@colliers.com

Catherine Walker

Associate Vice President

+1 804 968 1978

catherine.walker@colliers.com



Colliers

2221 Edward Holland Dr

Suite 600 | Richmond, VA

P: +1 804 320 5500